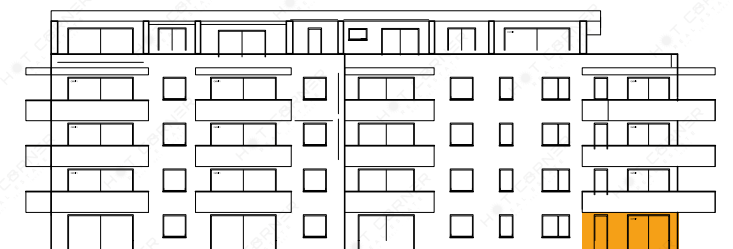
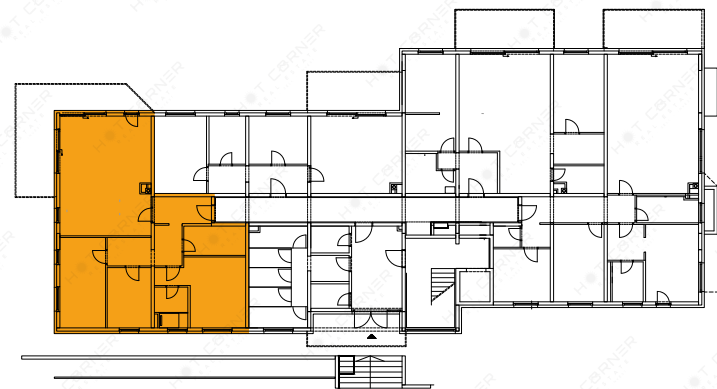


## TROSOBAN STAN

### POLOŽAJ STANA NA FASADI



### POLOŽAJ STANA NA ETAŽI



### OPIS I POVRŠINE PROSTORIJA

| Br.       | Prostorija                                | Obrada poda | Površina /m <sup>2</sup> | Koef. | Korigirana površina /m <sup>2</sup> | Potreban broj PM |
|-----------|---|-------------|--------------------------|-------|-------------------------------------|------------------|
| 1.        | Hodnik                                    | Keramika    | 5,60                     | 1     | 5,60                                |                  |
| 2.        | Dnevni prostor                            | Parket      | 40,66                    | 1     | 40,66                               |                  |
| 3.        | Predprostor                               | Keramika    | 8,97                     | 1     | 8,97                                |                  |
| 4.        | Kupaonica 1                               | Keramika    | 6,20                     | 1     | 6,20                                |                  |
| 5.        | Soba 1                                    | Parket      | 15,54                    | 1     | 15,54                               |                  |
| 6.        | Soba 2                                    | Parket      | 9,98                     | 1     | 9,98                                |                  |
| 7.        | Spavaća soba                              | Parket      | 17,47                    | 1     | 17,47                               |                  |
| 8.        | Kupaonica 2                               | Keramika    | 4,60                     | 1     | 4,60                                |                  |
| <b>S1</b> | <b>Ukupna neto površina zatvoreni dio</b> |             | <b>109,02</b>            |       | <b>109,02</b>                       | <b>2</b>         |

### TLOCRT STANA

